

# winter special 17



<b>Oil Pattern Distance:</b>	<b>38 Feet</b>	<b>Reverse Brush Drop:</b>	<b>38 Feet</b>	<b>Oil Per Board:</b>	<b>45 uL</b>
<b>Forward Oil Total:</b>	<b>15.075 mL</b>	<b>Reverse Oil Total:</b>	<b>7.065 mL</b>	<b>Volume Oil Total:</b>	<b>22.14 mL</b>
<b>Forward Boards Crossed:</b>	<b>335 Boards</b>	<b>Reverse Boards Crossed:</b>	<b>157 Boards</b>	<b>Total Boards Crossed:</b>	<b>492 Boards</b>

	Start	Stop	Loads	Speed	Crossed	Start	End	Feet	T.Oil
1	2L	2R	3	14	111	0.0	3.9	3.9	4995
2	9L	9R	2	18	46	3.9	9.0	5.1	2070
3	10L	10R	3	18	63	9.0	16.6	7.6	2835
4	11L	11R	3	18	57	16.6	24.2	7.6	2565
5	13L	13R	3	18	45	24.2	31.8	7.6	2025
6	14L	14R	1	22	13	31.8	34.9	3.1	585
7	2L	2R	0	26	0	34.9	37.0	2.1	0
8	2L	2R	0	10	0	37.0	38.0	1.0	0

Conditioner:  
Type In or Select One

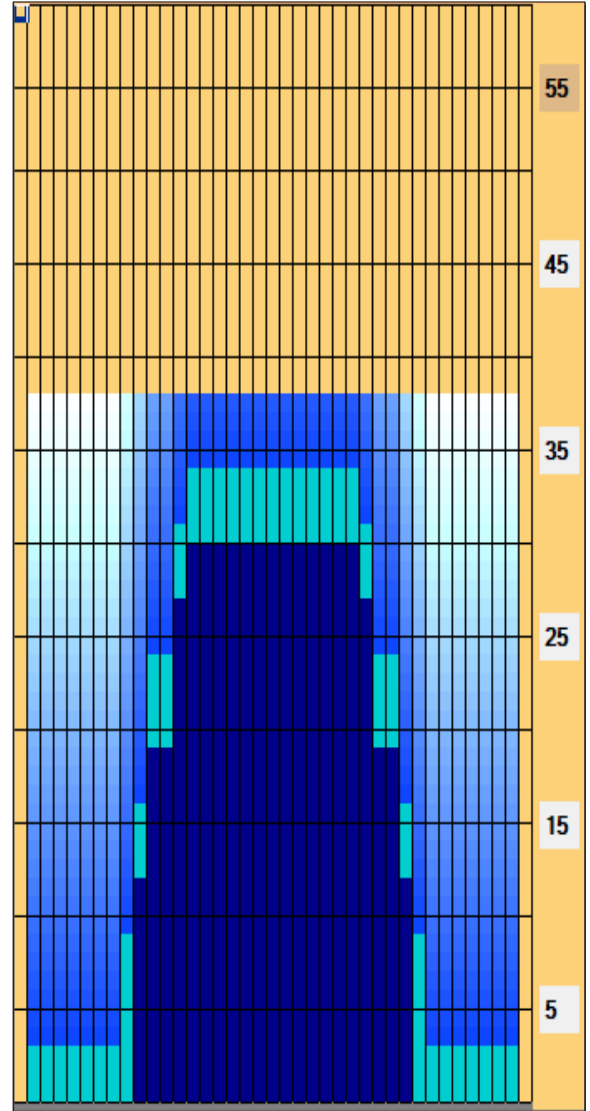
TransferType:  
Type In or Select One

Forward

Reverse

Combined

Buff



	Start	Stop	Loads	Speed	Crossed	Start	End	Feet	T.Oil
1	2L	2R	0	30	0	38.0	30.0	-8.0	0
2	14L	14R	1	22	13	30.0	26.9	-3.1	585
3	13L	13R	3	18	45	26.9	19.3	-7.6	2025
4	11L	11R	3	18	57	19.3	11.7	-7.6	2565
5	10L	10R	2	14	42	11.7	7.8	-3.9	1890
6	2L	2R	0	10	0	7.8	0.0	-7.8	0

This Pattern Up Loaded From Slot # 28 In Lane Machine On 28.11.2017 09:54

Item Description	3L-7L:18L-18R Outside Track:Middle	8L-12L:18L-18R Middle Track:Middle	13L-17L:18L-18R Inside Track:Middle	18L-18R:17R-13R Middle: Inside Track	18L-18R:12R-8R Middle:Middle Track	18L-18R:7R-3R Middle:Outside Track
Track Zone Ratio	8	2.4	1.02	1.02	2.4	8

